
Project Moturoa

Incorporating
The New Zealand Certificate in Conservation
(Operations) Level 4



Introduction

The Project Moturoa delivery is an incorporation of the Kaitiaki Whenua New Zealand Certificate in Conservation (Operations) Level 4. It is a full time programme with marae-based noho throughout the year. The programme has an aim to the following objectives:

- > To provide a viable pathway of learning and employment that links te taiao and kaitiakitanga to social, employment and economic outcomes
- > To provide a staged approach from entry level rangatahi all the way through to whānau / hapū / iwi leadership
- > To inspire participants to take action for the environment, for our society and for Māori
- > To offer participants a wide range of skills that integrates mātauranga Māori and provides a platform from which to effectively contribute to a healthy planet and healthy community
- > To allow participants to develop strong supportive networks and gain a respectful understanding of the varied stories from different iwi about our local rohe
- > To provide participants with key transferable skills for employment in a number of hands-on, outdoor industries, such as conservation, forestry, fisheries, etc.

History and Kaupapa

Project Moturoa brings together two powerful kaupapa in Te Tau Ihu. The Regional Intersectoral Forum is committed to a vision for Te Tau Ihu Māori to flourish.

The Te Tau Ihu Alliance Group (Kotahitanga mō te Taiao) offers up a vision for environmental leadership across our rohe.

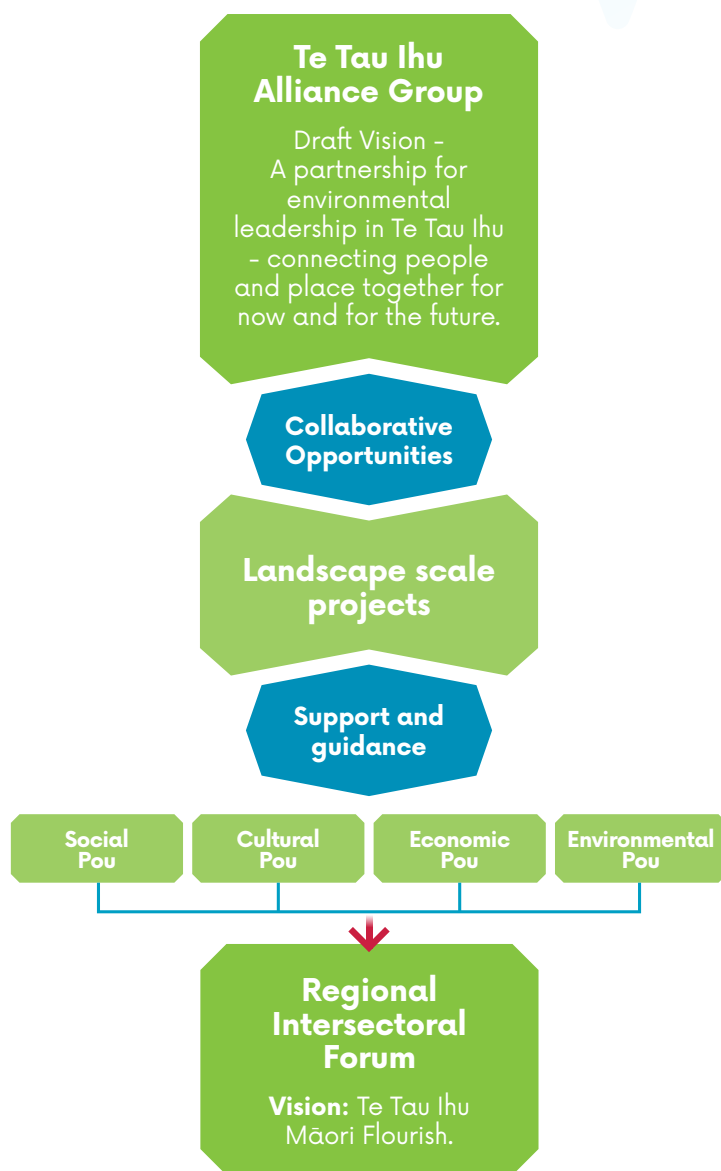
Together this opens up opportunities where we can enhance the mauri of the environment and the people in an interconnected way and Project Moturoa aims to do just that.

The purpose of Project Moturoa is to offer 20-22 rangatahi across Te Tau Ihu the opportunity to gain valuable conservation skills supported by mātauranga Māori. We hope to have two from each iwi, two from mātāwaka and two from Ngāti Waewae who look after the Western parts of Kahurangi.

The training will offer national qualifications alongside visits to the different marae to learn the diversity of stories, histories, tikanga and wāhi tapu. A mix of tāne and wāhine will be trained in skills that benefit their people as well as the mauri of our land, rivers and oceans in this rohe.

Fees free study

Take advantage of the first year free offer now available for tertiary study. See if you are eligible: feesfree.govt.nz



Mātauranga Maori overview of learning modules

An overview of learning modules:

- > Ecology, including Māori ecological principles, whanaungatanga and whakapapa
- > Conservation technology, including cultural mapping and cultural indicators
- > Kaitiakitanga principles and project management of a chosen kaitiaki project
- > Rangatiratanga in relation to taiao, te ao tūroa, wāhi tapu and tikanga around tapu, noa, aroha and related iwi monitoring
- > Conservation management, including rāhui and taiāpure
- > Communication, including responses under Te Tiriti and RMA advice
- > Plant knowledge, including whakapapa and rongoā
- > Animal knowledge, including whakapapa, a special significance to Māori
- > Weed control, Growsafe Certificate, including tikanga around using sprays
- > Predator control, including tikanga around killing and trapping
- > Risk assessment, health and safety management and first aid, including hauora
- > Basic track construction and maintenance
- > Chainsaw and firefighting skills

An overview of the noho marae learnings

- > **Mahi marae** including pōwhiri, karanga, whaikōrero, karakia and waiata. This will also include contributing to marae by participating in service projects at each noho. This provides students an opportunity to apply skills learnt in a safe environment.
- > **Mātauranga-a-iwi** including learning about kawa, tikanga, marae, whakapapa, taonga tuku iho, mahinga kai, wāhi tapu, kaitiakitanga and rangatiratanga
- > **Mahi toi** which may include poi, mau rākau and whakairo
- > **Whakaaturanga** opportunities for students to present their learnings and knowledge to marae and iwi whānau (individual and group presentations are part of the qualification requirements).

Students need to complete the full wānanga, including classroom and practical field work as well as the noho marae and assignments to achieve the qualification.

Person Specifications

We are looking for rangatahi aged 18 – 24 who offer the following:



A desire to learn and to share your own knowledge in a group setting.



An interest in building your leadership skills and contributing to iwi/Māori development.



A passion for taking care of our environment/ kaitiaki o te taiao.



A genuine interest in integrating mātauranga Māori into your conservation work.



A willingness to learn about the Māori history of Te Tau Ihu o te Waka-ā-Māui and of Aotearoa.



An enthusiasm for protecting our wāhi tapu and wāhi taonga.



A willingness to learn about and to experience ngā taonga tuku iho of the different iwi in Te Tau Ihu o te Waka-ā-Māui.



A reasonable level of fitness and/or a willingness to build this over the programme.



Eager to participate in regular noho marae and to support the tikanga and kawa of each marae respectfully.



An interest in some of the following career pathways:

- > Te Taiao (DOC, Council, Iwi, Community Groups, Conservation Organisations)
- > Iwi Development (Advisor, Advocacy, Monitoring, Administration, Research, Development)
- > Primary Industries
- > Tourism and Recreation
- > Ongoing Education Opportunities.



A commitment to assist the development of this wānanga for future participants.

Note: If you are interested and outside the given age criteria please get in touch with us.

Career Pathway

This programme aims to a viable pathway of learning and employment that links te taiao and kaitiakitanga to social, employment and economic outcomes. We aim to inspire participants to take action for the environment, for our society and for Māori and to do this in pathways that best match their skills sets and strengths.

The project team and the course tutors will work together to start mapping potential exit pathways from the first day of the programme.

We anticipate potential employment and training pathways that may include, but are not limited to:

- > Iwi, whānau, hapū support and leadership roles
- > Working for Māori in the resource management and consultation space
- > Advisory roles around tikanga, kawa and how to build bi-cultural work places
- > Iwi monitoring for wāhi tapu
- > Environmental restoration roles for community organisations
- > Working in forestry
- > Roles within the Department of Conservation, from track work, biodiversity work through to education, volunteer and Iwi liaison advisors
- > Roles with commercial entities that have a stake in conservation (Genesis Whio Project, Fulton Hogan Takahē Project, etc)



Programme Structure

Students will learn a key set of skills at their classroom base, then bring those skills to one of the iwi, working on an iwi or marae based project that will relate to their newly gained skills. The time with Iwi is Noho Marae and includes a deep cultural briefing of the history and teachings of that particular Iwi.

34 weeks of delivery will cover a wide skill set that allows students to move on successfully into education or employment.

An example of how this delivery might work:

Throughout the year students will spend time on Moturoa learning about pest control, whakapapa of animals and their place in the ecosystem; understanding how human interference can impact the ecosystem and how we can also work towards re-establishing the balance.

1 week at a marae every 5 to 6 weeks of the course learning the ways and history of the local iwi. At the same time the students will adopt a trapping network on a nearby iwi reserve to assist with restoring the native flora and fauna in the area. Iwi may also have a particular skill relevant to share during this time.

The February 2020 delivery is structured as a trimester, with a 6 week holiday break over Christmas (Dec-Feb) and a 2 week break in April, July and October. (**Please note that no study loans or allowances will be in effect for any breaks over 3 weeks.)

The programme, based at NMIT's Richmond Campus and Moturoa (Rabbit) Island, will involve 25 hours of scheduled tutor contact per week. Roughly every fourth week will include a noho marae (8 in total throughout the year). Each noho marae will include overnights, based at a variety of marae in the local rohe. The programme schedule will be similar to the following:

Trimester One

- > Risk Assessment (some aspects)
- > New Zealand Ecology (some aspects)
- > Fire and Chainsaws
- > Wāhi Tapu
- > Weed Management (Part 1)

Christmas break

Trimester Two

- > Risk Assessment (some aspects)
- > New Zealand Ecology (some aspects)
- > Weed Management (Part 2)
- > Conservation Technology
- > Animal Pest Trapping
- > New Zealand Flora and Fauna

Easter break

Trimester Three

- > Risk Assessment (some aspects)
- > New Zealand Ecology (some aspects)
- > Communications and Legislation
- > Basic Construction

Kaitiakitanga, rangatiratanga and mātauranga Māori will be covered throughout the whole programme. They will also be looked at with greater focus at noho marae.

A more detailed course schedule will be provided for the full year and updated for each trimester. However, all timetabled courses are subject to change.



Class Times

Weekly class hours

9am to 3pm (included in this time is up to 2 hours of study time allocated throughout the day by the class tutor). Classes may be condensed into 4 day weeks depending on timetable scheduling. Specific days may also be programmed as a field-based practical day where students have the opportunity to work on projects at Moturoa Island or other local areas. **For this it can be necessary to start at 8 and come back to Richmond on 4 or 4.30pm.**

Additionally, there will be regular, week-long noho marae. These noho will include overnights at a marae. Assume that the class will arrive at the marae on the Monday and return to Richmond campus on the Friday.

Programme Gear

NMIT Provides

NMIT will provide you with these essential things in the course of your studies on the Project Moturoa Kaitiaki Whenua programme. It is yours to keep but you are required to replace it if you lose it because it is a health and safety requirement for you to use this equipment:

- > Hi-Vis vest
- > Sun hat
- > Warm hat
- > Work gloves

NMIT will also give you access to discount prices on a pair of safety boots find out more - http://www.nzsafty.co.nz/graphics/nzsafty/pdf/safety_footwear.pdf) which you are required to wear when using chainsaws, scrub cutters and other situations on request.

Accommodation

Should you be looking for accommodation in Nelson please allow plenty of time to do so at key times of the year as the options can be limited. You will also need to provide your own bedding and any other necessities to see you through the year.

You will need the following list of items:

Essential

- > Day pack
- > Gumboots (steel caps)
- > Good tracking shoes
- > Polypropylene top and bottom
- > Rain jacket
- > Sleeping bag and liner (winter-rated if possible)
- > Sleeping mat
- > Multi-day pack (60L minimum) and liner
- > Woolen or work socks
- > Cup, plate, bowl, utensils (tramping set ideal)
- > Warm jersey/jacket
- > Torch
- > Personal first-aid kit
- > Sunglasses
- > Gloves
- > Pen and paper
- > Compass for navigation

Recommended

- > Long pants suitable for cold/wet weather
- > Rain pants
- > Gaiters
- > Camera
- > Emergency blanket
- > Other camping gear (tent, stove/ gas cooker, etc.)
- > Smartphone
- > Laptop / Tablet

Optional

- > Silky saw (fold-up pruning saw)
- > Any Personal Protective Equipment (PPE) you already own (earmuffs, hard-hat, hi-vis vest, etc.)
- > GPS
- > 2-way radio (UHF)
- > Musical instruments

nmit.ac.nz
info@nmit.ac.nz
0800 422 733

nmit

Nelson Marlborough Institute of Technology
Te Whare Wānanga o Te Tau Ihu o Te Waka a Maui



Ready to apply?

Applications are welcome any time, simply follow the steps below:

- 1 Visit nmit.ac.nz and select the programme you wish to study**

.....
- 2 You complete your application online and attach the following:**
 - > A CV with a cover letter stating why you would like to be a part of this programme.
 - > An iwi letter of support nominating you to be considered for enrolment.

.....
- 3 We will send you an acknowledgement by email or post to let you know that we have received your application**

.....
- 4 We select applicants**

You may be asked to supply more information or take part in an interview (this may be one-to-one or as part of a group).

.....
- 5 We contact you about the outcome**

If your application is successful, you will receive a confirmation letter from us by post or email. This means you have been accepted onto the programme you have applied for - congratulations!

If your application is not successful, we will contact you and help you explore other options with us.

.....
- 6 You secure your place**

To confirm your place you need to secure your enrolment.

You can do this online, or return the Secure Your Enrolment Form which will be included with your confirmation letter.

.....
- 7 We send you an invoice and you arrange your fee payment or see if you are eligible for fees free study: feesfree.govt.nz**

.....
- 8 Haere mai, welcome**